



Handle material

Reinforced nylon (15% glass filled PA6)

Male thread material

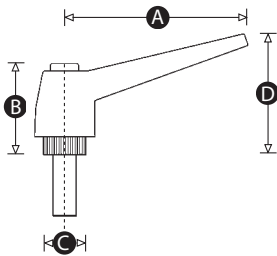
Zinc plated steel as standard. Stainless steel available on request (MOQs apply)

Standard colour combinations

Black handle with red cap.

Options

Also available with caps in red, black, grey, white, blue, green, yellow or orange (MOQs apply). Other handle RAL colours available on request (MOQs apply).



| Part No. | A | B | C | D | Thread size | Thread length (mm) | Insert material | Handle + cap colour |
|----------|-----|----|----|----|-------------|--------------------|-----------------|---------------------|
| 11433V | 43 | 26 | 12 | 32 | M5 | 15 | Steel | Black + Red |
| 11438X | 43 | 26 | 12 | 32 | M6 | 25 | Steel | Black + Red |
| 11439T | 65 | 37 | 15 | 46 | M8 | 20 | Steel | Black + Red |
| 11440P | 65 | 37 | 15 | 46 | M8 | 30 | Steel | Black + Red |
| 11443Z | 83 | 46 | 19 | 57 | M10 | 30 | Steel | Black + Red |
| 11444V | 83 | 46 | 19 | 57 | M10 | 40 | Steel | Black + Red |
| 11446Y | 104 | 51 | 24 | 68 | M12 | 30 | Steel | Black + Red |
| 11450T | 104 | 51 | 24 | 68 | M16 | 50 | Steel | Black + Red |