



**Fixing type**

Plain bores for fixing with bolts from above.

**Material**

Reinforced nylon (15% glass filled PA6)

**Standard handle colour**

Black

**Finish**

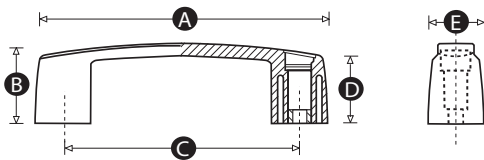
Matt

**Cap colours**

Black caps as standard. Also available with caps in red, grey, white, blue, green, yellow or orange on request. (MOQs apply).

**Thread**

Moulded bore



Part No.	A	B	C	D	E	Bore size (mm)
7758Z	119	35	93	29	26	6.5
7733P	146	40	117	34	29	8.5
7765T	163	45	132	38	31	8.5
7797X	214	50	179	42.5	35	8.5