

**Material**

High impact resistant thermoplastic

**Standard colour**

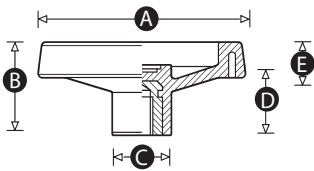
Black

**Finish**

Matt

**Insert material**

Zinc plated steel



Part No.	A	B	C	D	E	Pilot bore (mm)	Maximum bore (mm)
5265X	100	44	28	33	16	8	16
5266P	130	49	31	35	20	8	16
5267S	160	56	40	40	24	8	20
5268V	200	61	50	40	28	8	20
5269Y	250	70	56	44	32	8	20