

SS

Material

High impact resistant thermoplastic

Standard colour

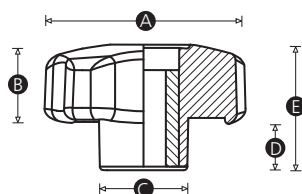
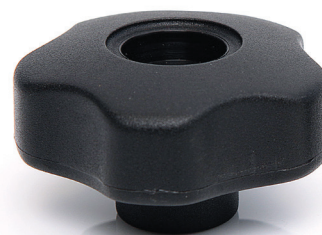
Black

Finish

Matt

Female insert material

Brass, zinc plated steel or stainless steel



| Part No. | A | B | C | D | E | Thread size | Insert material |
|----------|----|----|----|----|----|-------------|-------------------|
| 10822X | 28 | 16 | 14 | 9 | 25 | M5 | Brass |
| 10824P | 28 | 16 | 14 | 9 | 25 | M6 | Brass |
| 14306R | 28 | 16 | 14 | 9 | 25 | M6 | Zinc plated steel |
| 14326Z | 28 | 16 | 14 | 9 | 25 | M6 | Stainless steel |
| 10833X | 40 | 17 | 18 | 12 | 29 | M6 | Brass |
| 10835T | 40 | 17 | 18 | 12 | 29 | M8 | Brass |
| 14307Y | 40 | 17 | 18 | 12 | 29 | M8 | Zinc plated steel |
| 14327V | 40 | 17 | 18 | 12 | 29 | M8 | Stainless steel |
| 10846P | 50 | 19 | 21 | 12 | 31 | M8 | Brass |
| 14328R | 50 | 19 | 21 | 12 | 31 | M8 | Stainless steel |
| 11187P | 50 | 19 | 21 | 12 | 31 | M10 | Brass |
| 14309Q | 50 | 19 | 21 | 12 | 31 | M10 | Zinc plated steel |
| 14329Y | 50 | 19 | 21 | 12 | 31 | M10 | Stainless steel |
| 10857P | 60 | 21 | 23 | 13 | 34 | M10 | Brass |
| 11191V | 60 | 21 | 23 | 13 | 34 | M12 | Brass |
| 14310X | 60 | 21 | 23 | 13 | 34 | M12 | Zinc plated steel |
| 14330U | 60 | 21 | 23 | 13 | 34 | M12 | Stainless steel |