

**Material**

Duroplast

**Standard colour**

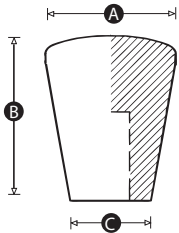
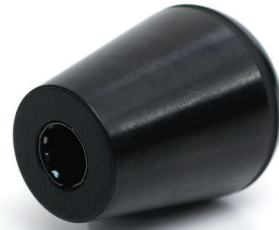
Black

**Finish**

Gloss finish

**Bore**

Push-fit assembly with tolerance ring



| Part No. | A  | B  | C  | To fit shaft diameter - H9 tolerance (mm) |
|----------|----|----|----|---|
| 3029U    | 22 | 30 | 12 | 6   |
| 1552S    | 28 | 35 | 18 | 8   |
| 1564P    | 35 | 44 | 22 | 10  |